

# Timespace ASC100 Anti-Surge Cable

DRIVING SECURITY



The ASC100 Anti-Surge Cable has been developed by Timespace to provide a controlled power-up of external video monitors.

Some passenger video monitors have been shown to draw an instantaneous current of up to 24A on power-up. This surge current exceeds the V400 power supply surge specification of 6A for 20ms for each monitor output. The V400 continuous current specification for each of the two monitor outputs and the Molex output is 2A.

Fitting an ASC100 Anti-Surge Cable enables these monitors to be powered by the V400 without exceeding the V400 power supply specification.

## Connection / Set-up

- 1 Connect the monitor to the ASC100 cable
- 2 Plug the ASC100 cable into the V400
- 3 Configure the monitor operation via the V400 menu system

## Installation / Operation

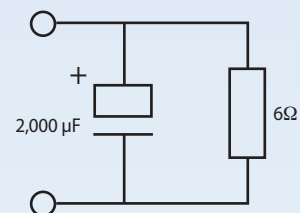
- The ASC100 Anti-Surge Cable connects between the V400 Main / Aux Video Output and the video monitor
- When in place, the ASC100 limits the surge current to a maximum of 6A at 12V for up to 20ms
- After 20ms, the maximum allowable current draw is 2A (limited by the inbuilt V400 fuse).

## Connections / Interfacing

- Neutrik 3 pin XLR plug and socket
- RG59 Video cable with ground and power
- Overall length 240mm

## Typical High Surge Load

Equivalent circuit:



## Regulatory Approvals

CE Mark (EN55032:2012, EN55024:2010)  
VCA CoP approval  
RoHS  
WEEE

Timespace Technology Ltd reserves the right to amend product specifications without notice and without incurring obligation.



**TIMESPACE**

MANUFACTURED BY **TIMESPACE** IN THE UK



Timespace Technology Ltd Lakeview Court Ermine Business Park Huntingdon PE29 6UA UK

t: +44 (0)1480 414147 f: +44 (0)1480 414146 e: mail@tspace.co.uk [www.tspace.co.uk](http://www.tspace.co.uk)

TT0722 Issue 2